

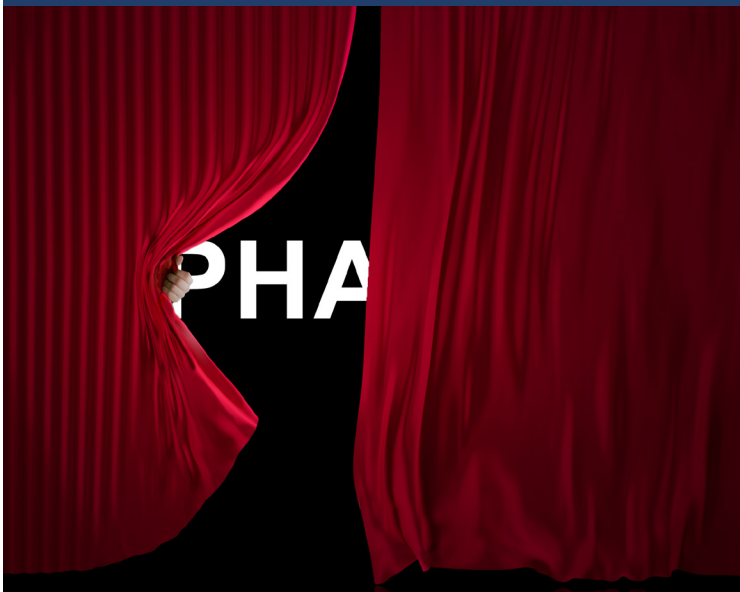
# The OREGON AVENUE OBSERVER



## THE PROJECT UPDATE

Can you feel the excitement and anticipation? Phase 1 of the Oregon Avenue Reconstruction Project is expected to be complete in just a few weeks. A visual of the new roadway and sidewalks is now coming into focus. In the last month we've seen installation of curbs and gutters, the milling and paving of existing roads and the addition of driveway aprons. Additional information on driveway aprons is provided on the following page.

In the coming weeks we will be completing the installation of curbs, gutters and wheel chair ramps, all in preparation for new sidewalks. The project team is looking forward to presenting the first segment, **Phase 1**, of the Oregon Avenue Reconstruction Project.



## MEET THE CONSTRUCTION TEAM: CAPITOL PAVING OF D.C., INC.

When it comes to construction projects in the District, Capitol Paving of D.C., Inc. is a leader in the industry. They have been serving the Washington D.C. Metropolitan Area for over 30 years. We sat down with Abel Pereira - General Superintendent, Geovanni Avila - Project Manager, Chris Milburn - Project Superintendent, Vicente Avila - Asst. Project Manager, Jose Cambroner - Project Superintendent and Tracy Moore - Site Safety Representative. We discovered that they possess over 125 years of construction and engineering experience.

Capitol Paving specializes in heavy highway construction, roadway reconstruction, excavation, road widening, underground utility construction, green infrastructure and more. When presented with the question what sets this project apart from the crowd, Geovanni Avila replied, "the opportunity to incorporate green infrastructure into a roadway project." On this project we will be installing BMP's (Best Management Practices) like bioretention ponds. They have proven to be the most effective and practical means of preventing polluted stormwater run-off from contaminating our larger bodies of water. Meet the Capitol Paving of D.C. Team.



The management team



NORI THE REPORTER TALKS DRIVEWAY APRONS

Have you noticed the next "Big Thing" on Oregon Avenue?

If you look closely you will see the installation of driveway aprons. What exactly is a driveway apron?



A driveway apron is the section where a private driveway connects to the public roadway. It is usually the width of the driveway and extends from the curb to the far edge of the sidewalk or to the property line. In most communities, sidewalks, curbs, gutters, and driveway aprons are all regulated by local codes. These areas are considered either public access (sidewalks and aprons) or a part of the community's storm drainage system (curbs and gutters). This installation process can be an inconvenience to residents because it can take anywhere from three to five days to complete and involves the closing of each driveway. When you add that to the rainy Mid-Atlantic weather, this becomes an unpredictable and tedious process.

We are happy to report that the team on the Oregon Avenue Reconstruction Project worked together alerting residents in advance of the closures. They provided residents with instructions on how to proceed should they need to leave or enter their driveway. The driveway apron installation was a well executed process that involved expert planning, precision timing and continuous community engagement and coordination.

For more information, photos and Nori the Reporter's recap, please visit the project website at [oregonavenueproject.com](http://oregonavenueproject.com).



Access to driveway includes the use of steel plates

THE OBSERVER SAFETY INTERSECTION

**Don't jump off the Pinehurst Creek Bridge!** We've had a very long spring and we're happy that summer is finally here. We can cautiously proceed with a few of our summer activities like taking the dog for a brisk run or walk in the park, exercising outdoors and leisurely strolls with the family. However, if your activities include jumping into the water below the bridge, **STOP**. This is one summer activity that can be very dangerous. The water below is shallow and serious injuries can occur.

While this is not directly related to construction, we felt it was important to mention here in **The Observer Safety Intersection**, where safety is our first concern. We look forward to replacing the bridge in Phase 3 but would like to remind you that the no jumping policy will continue to remain in effect. Have a wonderful summer and remember to remain alert and proceed with caution along the Oregon Avenue Corridor.

This publication is produced by the Oregon Avenue Reconstruction Project Community Engagement Team. We can be reached at 202.808.5400 or by email at [info@oregonavenueproject.com](mailto:info@oregonavenueproject.com).



Pinehurst Creek Bridge

PROJECTED CONSTRUCTION PERIOD OF PERFORMANCE	2020					2021			
	Q4	Q1	Q2	Q3	Q4	Q1	Q2	Q3	Q4
Phase 1 Activities - Beech St. to Western Ave.									
Phase 2 Activities - Military Rd. to Rittenhouse St.									
Phase 3 Activities - Rittenhouse St. to Beech St.									